

Association for Traditional Rural Landscapes in SW Finland – Egentliga Finlands kulturmarksförening



**Networking experiences from
South-West Finland and the
local-level implementation of
agri-environmental schemes**

Kimmo Härjämäki
Chairman of the Assoc.

TRINET Workshop
Building Nordic-Baltic and European partnership in grassland farming for biodiversity
Sigulda, Latvia 11.-12.10.2007

Structure of my presentation

- Facts about association, ManTra-network-
- Some characteristic thing about seminatural grasslands in SW Finland
- Local level implementation of agri-environmental scheme: *CASE: Participatory general planning in farming areas*

Some facts about SW-Finland

- 2 province: Varsinais-Suomi ja Satakunta
- 78 municipality
- 680.000 inhabitants
- Unique sea and archipelago
- intensive farming area
- rich cultural heritage



Association for Traditional Rural Landscapes in SW Finland –

- Established autumn 2002
- 70 members from different organisation and occupation

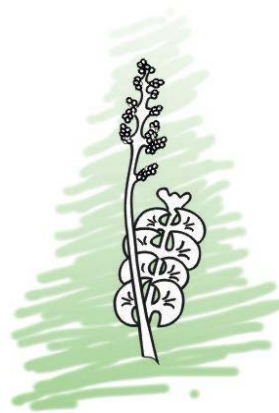
OUR GOALS ARE:

- To enhance management of trad. rural biotopes
- Give advise about management and subsidies concerning rural biotopes to farmers and associations
- To start national and international projects
- To be part of international networking
- Comment burning issues



LOGO

- *Botrychium lunaria*
- Good indicator for great meadow
- Declined like other *Botrychium* species



Varsinais-Suomen perinnemaisemayhdistys ry
Egentliga Finlands kulturmärksförening rf

National projects



- Information and objective advising about subsidies (special measures)
- Advising projects for farmers
- 2007 will start project “Leader environment activator”
 - Local rural development communities (Leader-groups) will together employ this person in province Varsinais-Suomi

International projects

- ManTra (MANagement and conservation of TRAditional landscapes in the Nordic and Baltic countries and in the Republic of Karelia)
- Member of EUROSITE
- EUROSITE's next annual general meeting will be hold in SW-Finland spring 2008



Goals of ManTra



www.landscape.fi

- To create network for Nordic-Baltic-Karelian NGOs that are working with the management and preservation of semi-natural grasslands / traditional rural biotopes
- To create an Internet forum and innovative higher educational eLearning courses concerning this issue
- To create preconditions for a larger educational project to continue work started in this project.

Seminars



Nida "desert" - meeting in Lithuania

■ 6 meetings

- First meeting in Estonia 21.9.2004
 - Theme: "Setting priorities and tasks of the project"
- Second meeting in Karelia 26-30.5.2005
 - Theme: "Non Governmental organisations and the management of the traditional rural landscapes"
- Third meeting in Norway 15-18.9.2005
- Fourth meeting in Lithuania 14-18.6.2006
 - Theme: "How to get financing for the management of traditional rural biotopes"
- Fifth meeting in Iceland 7-9.9.2006
 - Theme: "Products of traditional rural biotopes and landscape."
- Sixth meeting in Finland 6-9.6.2007
 - Theme: "Focusing on the management quality of traditional rural biotopes and landscapes in the Northern Europe"

Financing



- Nordic Council of Ministry
 - Norden Nabo network
 - No salaries

Other activities: Action!

- Courses, seminars
- Camps
- A rented cottage on SE-Estonia for members of Association



Information



Varsinais-Suomen perinnemaisemayhdistys ry
Egentliga Finlands kulturmarksförening rf

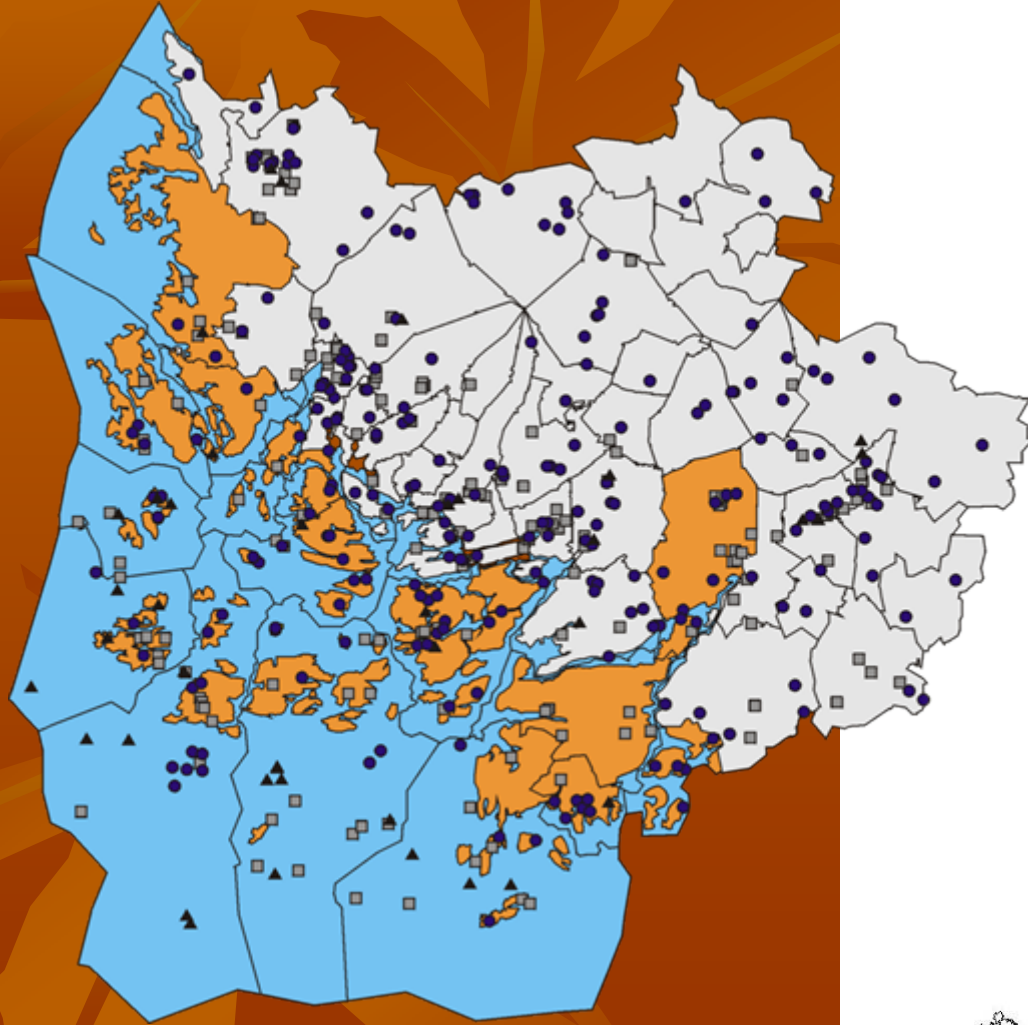
- Ketonoidanlukko –leaflet to members 2times/year
- Picture-blog about our happenings, travels and so on
– vspmy.vuodatus.net
- Mailing list called PEMA and MANTRA about happenings, camps, seminars in Baltic sea Region
- Main page of association (at the moment only in Finnish)

www.vesperinnemaisemat.net

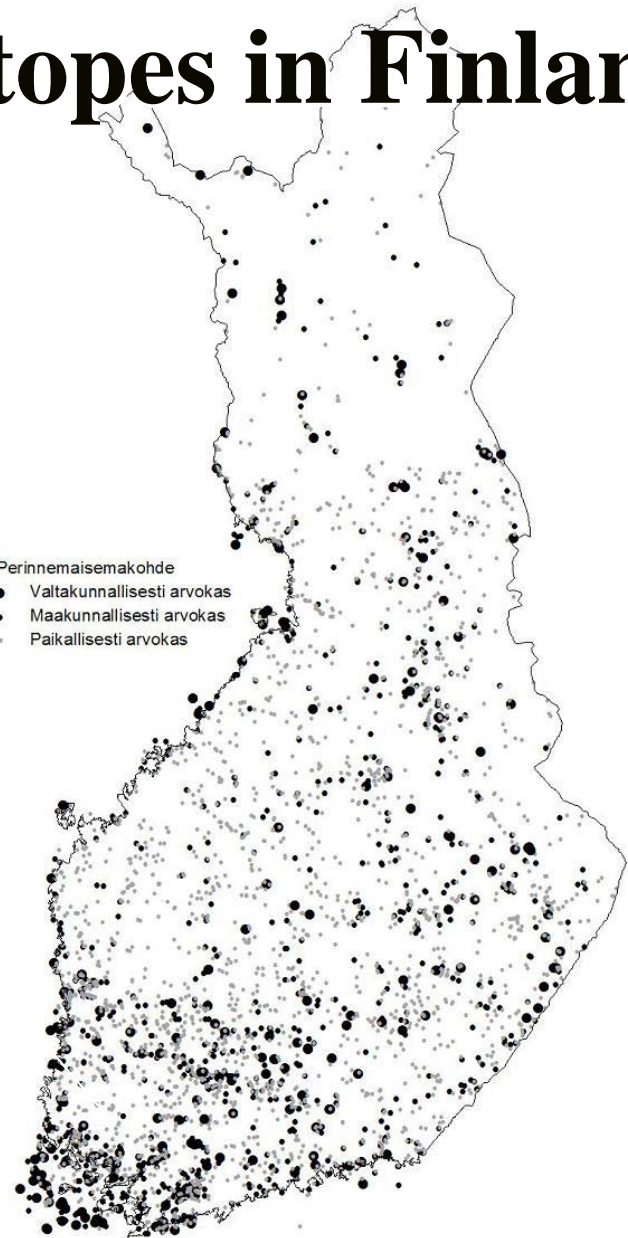
The background of the slide is a solid orange-brown color, overlaid with several large, semi-transparent silhouettes of autumn leaves. The leaves are scattered across the frame, with some showing detailed vein patterns. The overall aesthetic is warm and natural.

**Trad. Rural biotopes
in SW Finland**

Traditional rural biotopes in Finland



- Perinnemaisemakohte
- Valtakunnallisesti arvokas
- Maakunnallisesti arvokas
- Paikallisesti arvokas



Goal of management of trad. Rural biotopes in Finland

Nationally valuable trad. Rural landscapes should be managed until 2010!

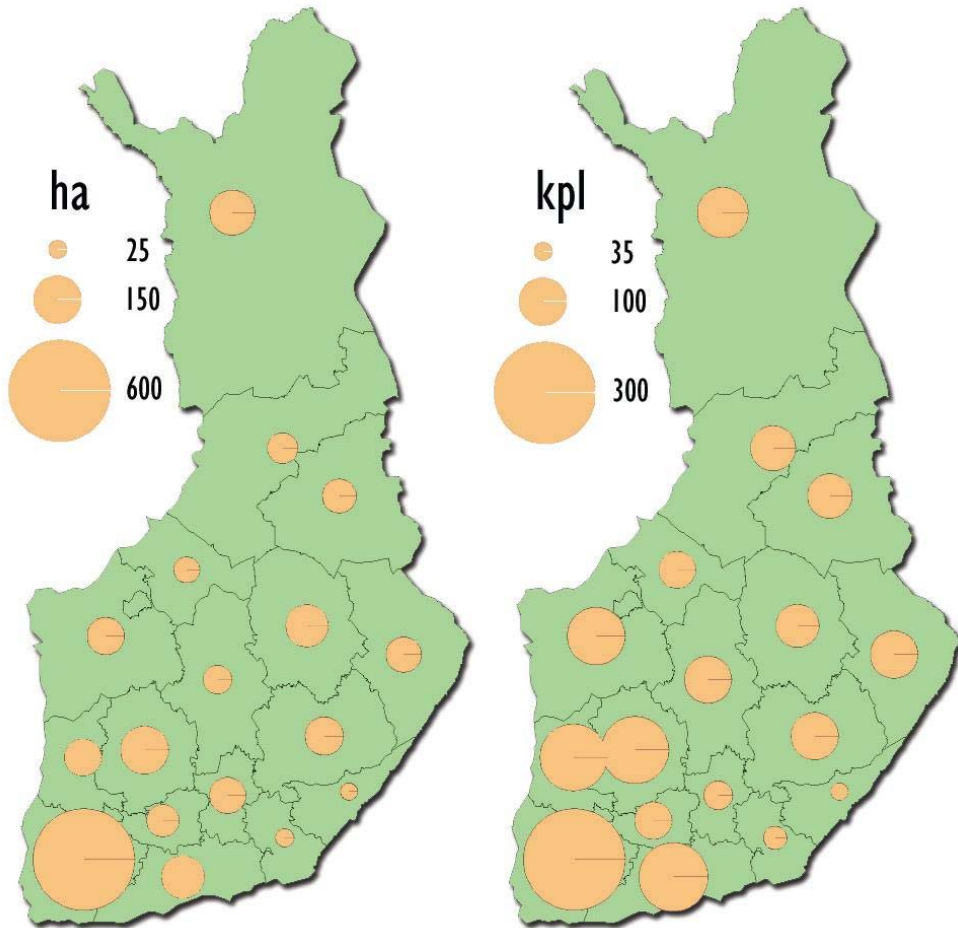
Province	Valuable Trad Rural- landscapes (hctrs)	Goal (hctrs)
Varsinais-Suomi	<u>3 010</u>	<u>10 000</u>
Satakunta	<u>1 160</u>	<u>4 000</u>
Uusimaa	1 070	5 500
Pirkanmaa	900	4 500
Häme	1 080...	4 700...
In Finland all together	18 690	60 000

Province Varsinais-Suomi has responsibility in Finland for:

Dry and fresh meadows, seashore meadows, heaths, pollarded wooded meadows

hectars

Fresh meadows



~1 000 hctrs in province Varsinais-Suomi



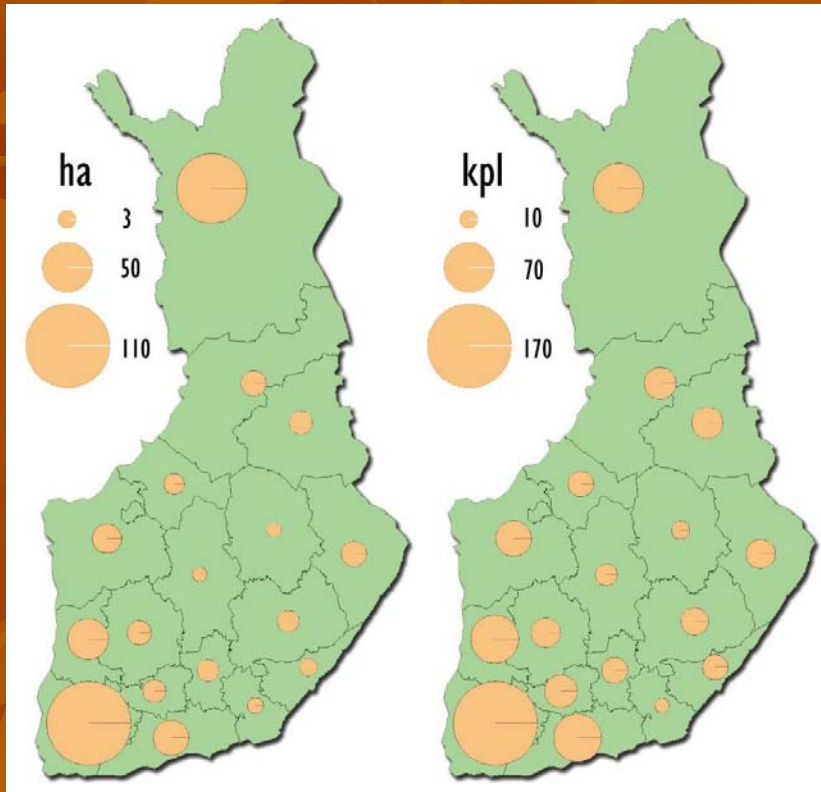
Species example from fresh meadow in SW-Finland



Clouded apollo, Picture Iiro Ikonen

Dry meadows

180 hctrs



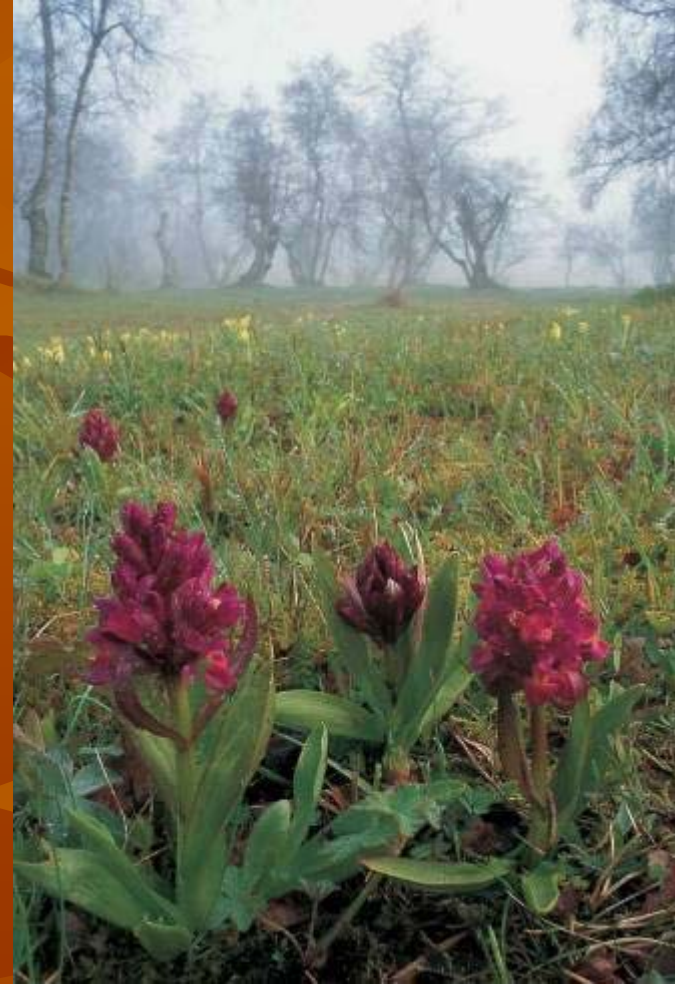
Wooded trad. Rural landscapes

A photograph of a rural landscape. In the foreground, a large, dark, rounded boulder sits on a patch of dry, brown grass and fallen leaves. Behind the boulder, a line of trees, including several tall, thin deciduous trees without leaves and some evergreens, stands on a slight rise. The background shows a rolling landscape with more trees and a clear sky.

Valuble sites over 1 000 hectars

Pollarded meadows in archipelago

- Biodiversity is highest
- Also calcareous soils
- A lot of plant species which you can not find from mainland
- Only 18 hctrs managed



Heaths



- 197 hctrs
valuable sites
- Grazed 159 hctrs

Seashore meadows

- Valuable managed sites ~800 hctrs
- Farmers who have beef cattle are interested in seashore meadows



Some problems in SW Finland

- Amount of diary cow-farms are declining
- It's not always easy to find grazing animals
- Biodiversity is very high on little sites (like rocky dry meadows) but management is not economically profitable to landowners
- Lack of knowledge about special measurement of agri-environmental scheme
- There enough of bureocracy without some extra subsidies

Participatory general planning in farmland areas

- Financing by Finnish MoAF
- Carried out by regional environmental centres
- Centres can do planning with own staff or buy it from planning entrepreneur

Goals of participatory general planning

- ◆ To strengthen knowledge of enhancing the biodiversity in farmland areas and to channel funds to right sites



Participatory general planning in farmland areas

- Includes often personal advising for farmers
- Founded sites are presented in publication
- Evaluated as a good tool to “boost” farmers activity and knowledge about trad. Rural biotopes and their financing



The special measures of AES in Finland

- Management of traditional rural landscapes
- Enhancement of biodiversity and landscapes in farming areas
- The management of wetland sites
- Larger buffery zones to watershore fields (average 15 meters from watershore to field)

Maximum level: 450 €/ha/year (based on cost-calculation of management)

- Contracts are 5 or 10-years

Level of subsidies (new in Finland 2007-2013)

- Establishment of wetland area 4000€/ha
- First restoration of old traditional rural biotopes 676 €/ha/year (can be paid only 1 year)
- Valuable small sites (e.g. Dry meadows) 135€/site) [(5-30 acres)]

**Thank you – have a nice autumn
:)**

Contact:

- Telephone: + 358 40 519 6545
- Mail: kimmo.harjamaki@vsperinnemaisemat.net

Foto: Tuuli Pakkanen

